

Reflections

A MONTHLY NEWSLETTER FROM THE RIVER OF GRASS UNITARIAN UNIVERSALIST CONGREGATION
DAVIE, FLORIDA FEBRUARY/MARCH 2020



LET'S GO HOME Rev. Amy Carol Webb

It was a typical Florida Fall day some 23 years ago that 30-odd members of the UU Church of Ft. Lauderdale held a "Vision Night" to affirm the need for a UU congregation in Western Broward County -- to cast a vision for a new future for Unitarian Universalism in their time, a new home for the faith they love.

So it came to be that the Beloved Community of River of Grass was birthed – without a building, without a permanent address, without assurances this could even work -- just the

vision and passion and dreams and determination of 70 people who put their signatures on the line in a brand new Membership book, and put their own lives and livelihood on the line to make this vision come real.



This bunch of visionaries gathered in a bunch different properties, all of them temporary, and none of them their own; there was Shotgun Road, and Central Park Elementary School, and Toddler Tech, and then a plan to build on land on Dykes road that was never realized, until finally River of Grass leased this this place we are right now in March of 2011. It was a warehouse-style guitar store that people you know and love here at the River transformed into sanctuary and classrooms and offices, and kitchen space, and a big sign on the front proclaiming that the River of Grass Unitarian Universalist Congregation could finally put its feet down for a while to breathe and grow in body and in spirit, to dream anew.

Here we are now in 2020. And it's our turn. Our time to take those first visionaries' dream across the next threshold, into a forever home of our own, that we might keep living our mission, fulfilling our vision – keeping our promises to one another and to this faith we share.



IN THIS ISSUE

<i>Stay Connected!</i>	2
<i>Board President</i>	3
<i>Capital Campaign Vote</i>	3
<i>UUA General Assembly</i>	4
<i>Worship Services</i>	4
<i>Annual Prosperity Drive and Capital Campaign</i>	5
<i>Yard Sale</i>	5
<i>River of Grass Band</i>	6
<i>Getting to Know UU's</i>	7
<i>Foundation Update</i>	7
<i>Proposed Finance Policy</i>	8
<i>Poetry Service</i>	8
<i>Faith Development</i>	9
<i>Caring Team</i>	9
<i>Tax Planning for a Large Gift</i>	10
<i>Climate Workshop</i>	10
<i>Strategic Items – Seeking Energy</i>	11
<i>What's This?</i>	12
<i>Upcoming Events</i>	13
<i>Whalecoast Alaska</i>	14

(Continued on page 4)

OUR SUNDAY LOCATION

11850 W. State Road 84, Suite 1, Davie, FL 33325

EVERY SUNDAY

Worship Service: 10:30 to 11:30 am. **Hospitality Hour:** 11:30 am to 12:30 pm.

Faith Development Classes (7th – 12th grades): 10:00 am to 11:00 am

Faith Development Classes (K – 6th grades): 11:00 am to 12:00 noon

FRIENDLY REMINDERS FOR OUR MEMBERS

There is plenty of parking outside the sanctuary, but please leave closer parking spaces for our guests and physically challenged worshippers.

All meetings are held at 11850 W State Road 84, Suite 1 in Davie unless otherwise noted.

OUR PRINCIPLES

We, the member congregations of the Unitarian Universalist Association, covenant to affirm and promote:

The inherent worth and dignity of every person;

Justice, equity and compassion in human relations;

Acceptance of one another and encouragement to spiritual growth in our congregations;

A free and responsible search for truth and meaning;

The right of conscience and the use of the democratic process within our congregations and in society at large;

The goal of world community with peace, liberty, and justice for all;

Respect for the interdependent web of all existence of which we are a part.

STAY CONNECTED!

Between issues of *Reflections* you can stay connected to the River of Grass Congregation the following ways:

- ◆ **Sign up for our weekly email** with events and news: send an email to office@riverofgrassuu.org
- ◆ **Visit our Facebook page:** www.facebook.com/riverofgrassuu
- ◆ **Follow us on Twitter:** @RiverOfGrassUU or www.twitter.com/riverofgrassuu
- ◆ **Visit our calendar:** www.riverofgrassuu.org/calendar.html (or browse to: www.riverofgrassuu.org – click on Calendar/Events)



By Slimguy - Own work

River of Grass

UNITARIAN UNIVERSALIST CONGREGATION

Phone 954-723-7877

www.riverofgrassuu.org
office@riverofgrassuu.org

Minister

Rev. Amy Carol Webb
minister@riverofgrassuu.org

Newsletter

newsletter@riverofgrassuu.org

Editor Melissa Buehler

Copy Diane Diaz

Layout Brit Lundell

Board of Trustees

board@riverofgrassuu.org

President Scott May

Vice President Susan Juncosa

Secretary Linda Lathroum

Treasurer Brit Lundell

Trustee Riley Cothran

Trustee Linda Morgan Crain

Trustee Marilisa Lawless

Trustee Rick Tucker

Youth Representative Marina deMoraes

Committees

contact info at www.riverofgrassuu.org

Faith Development Diane Lade

Finance Rob Giblin-Davis

Membership Kathy Jens-Rochow

& Zena Tucker

Nominating Esther Sampol

Worship Rita Cherubini

Staff

contact info at www.riverofgrassuu.org

Choir Director Gayle Giese

Dir. of Faith Development Karen Gonzalez

Office Administrator Sandy Blair Chibnick

Teams

contact info at www.riverofgrassuu.org

Adult Faith Development *Open*

Auction Ahysa Boutron, Scott May,

& Carolyn Sant Angelo

Capital Campaign/
Stewardship Rita Cherubini

Caring & Kathy Jens-Rochow

..... Kristine Barkley, Deb Giblin-Davis

& Georgette Lewis

Communication Zena Tucker

Concert/Café Robby Greenberg

Facilities Riley Cothran

Facility Rental Ken Bresnahan

Future Home Scott May

FUUndraising Ken Bresnahan

Interfaith Outreach Linda Morgan Crain

Music Gayle Giese, Linda Lathroum,

Brenda Parker, Anne Smith, & Aaron Stang

Pastoral Care Deb Giblin-Davis,

Pat Katz & Marilisa Lawless

Personnel Rev. Amy Carol Webb

& Janet Schwartz

Second Helping Kip Barkley

Security Rick Tucker

Service, Social Justice,

& Green (SSJGT) Steve Jens-Rochow

Shared Ministry Diane Lade

& Janet Schwartz

Welcoming Congregation ... Kathy Jens-Rochow

YUUnng Adult Group Linda Lathroum



FROM THE PRESIDENT

THE FUTURE'S SO BRIGHT, I GOTTA WEAR SHADES

Scott May

This catchy lyric is from a Timbuk3 song in the 80s, and also shared by our beloved Minister. And today it applies to River of Grass.



At our Mid-year meeting in February, members aligned and voted to launch a Capital Campaign to reach for our future together. Members voted 74 Yes, 0 No, and 1 Abstain. I see this as a defining moment for our 21-year old congregation. Our trajectory is set, and we are cohesive in our quest: to boldly pursue a permanent home. A home with more space and more options, enabling us to carry out our mission and reach new heights.

I'm excited. I'm energized. I'm grateful.

There is much to be done to reach this goal. It will take effort and dedication. It will take focused reflection, and tremendous generosity. It will take hope. It will take love. And together, we have what it takes to make this happen. I agree with Barry's conclusion that we "can do this"!

So put on your shades! Let's journey together!



CAPITAL CAMPAIGN – HERE WE COME!

Scott May

Members voted overwhelming to launch a Capital Campaign, at our Mid-year meeting in February. The results were: 74 Yes, 0 No, and 1 Abstain.

Following the meeting, your board voted unanimously on the motion:

Launch a Capital Campaign (starting around March 2020, to run simultaneously with the Annual Prosperity Drive),

- ◆ *where funds collected will be used to purchase a home (and related costs such as moving, permits, renovations, and professional fees such as lender, legal, consulting, real estate, etc.),*
- ◆ *and where donations will be paid within 2-3 years (by February 2023),*
- ◆ *and where members have the option to receive a refund of their Capital Campaign donation should a home not be purchased (or equivalent, or via a partnership) within 4 years from the end of the campaign (February 2027).*



Teams are busily preparing to launch the Capital Campaign. Stay tuned for more information, and feel free to reach out to the board with questions.

LET'S GO HOME

(Continued from page 1)

As we explore the month of March theme of Abundance, let us celebrate the abundance we share here at River of Grass. Abundance of faith, of spirit, of vision, of determination, of ingenuity, of hope, of kindness, of courage -- of the resources we need to keep the lights on and the flame burning. Abundance of Love.

Just like that band of visionaries 23 years ago, we don't yet know what our forever home looks like. Or where it will be. Or exactly how we will get there. But we know each other. We know who we are. We know the promises we have made. So, we know we can.

On February 2, 2020, this Beloved Community at River of Grass came together, took in the data, listened deeply to one another's hearts, looked toward the horizon, and took a vote for a resounding YES! to a Capital Campaign to carry us onward into our dream made real.

Let's go, Beloveds – let's go home!

UUA GENERAL ASSEMBLY (GA)

Scott May

Ever wonder how our parent organization (Unitarian Universalist Association) works? Ever wonder how the collective power of all UU congregations unites to make a difference in our world? Ever wonder how you fit into the larger UU community?

Then consider participating in the UUA General Assembly (GA). It is an annual gathering of UUs from all over the United States, and the world. It's a time when 5,000 UUs converge and bring our varied voices together to align on the key areas that most need our energy and focus.

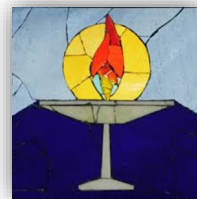
This year's General Assembly will convene in Providence Rhode Island from June 24-28. This location was selected to coincide with the pilgrims landing at Plymouth Rock in 1620, 400 years ago.

Attending General Assembly can be a very uplifting and moving experience, as it's an opportunity to witness the broad impact of our faith. Plus GA can be accessed online, making it within reach of nearly everyone.

River of Grass is allotted three member "delegates", who are authorized by the board to vote at GA on behalf of our congregation. It's an honor and a responsibility to be a delegate. In addition to our allotted member delegates, Ministers and highly credentialed Religious Education professionals are also delegates.

More information can be found at uua.org/ga. And feel free to ask around, as many members and leaders have attended GA. If you're interested in going to GA and/or being a delegate, please reach out to Scott or any board member. Some funding is available.

WORSHIP SERVICES



SUNDAY AT 10:30 AM

ABUNDANCE

- March 1 *Settling For More*, Rev. Amy; Service Host: Kallie LeFever
- March 8 *The Fabulous Destiny of An Abundant Heart*, Beyssa Buil; Service Host: Rita Cherubini
- March 15 *Celebrating 80 years of UUSC: Brave Legacy, Bold Future*, Karen Gonzalez; Service Host: Barbara Ratchford
- March 22 *Poetry Spring Equinox: Poems Aplenty*, Zena Tucker; Service Host: Diane Diaz
- March 29 *Women's History: Abundance Squared*, Rev. Amy; Service Host: Marjie Loring

LIBERATION

- April 5 *Passover*, Rev. Amy; Service Host: TBD
- April 12 *Easter*, Rev. Amy; Service Host: TBD
- April 19 *Earthday*, Beyssa Buil; Service Host: Rev. Amy
- April 26 *Celebration Sunday*, Rev. Amy; Service Host: TBD

ANNUAL PROSPERITY DRIVE AND CAPITAL CAMPAIGN

MARCH 29 – MAY 3, 2020

Rita Cherubini and Kathy Jens-Rochow, Co-Chairs

Well, we are off! We've got a team together with Team Leaders covering Finance, Communications/Visuals, Publications, Stewards and Events: Roy and Janet Schwartz, Brit and Maureen Lundell, Kathy and Steve Jens-Rochow, Ken and Leana Bresnahan, Rita Cherubini, Karen Gonzalez, Elly Keane, Kristine Barkley, Ted Raab, Kat Holland, Rev Amy and Sandy Chibnick. We have been meeting, planning, assigning, creating and scheduling! We thank them so for their dedication to River of Grass!



The combined APD/CC will begin will start 3/29 with a Kupcake Kickoff after service. Rev Amy will be weaving this kickoff celebration into the service and the bakers are going to do their magic! If you would like to create Kupcakes with sparkle in mind, please get in touch with Maureen Lundell, The Kupcake Kween at maureentlundell@gmail.com.

This is the plan. All Members and Friends will have a personal meeting with one of the Visiting Stewards. Schedules will be set up and you will be contacted. Please make yourself available as conveniently as you can. You will be making your decision about BOTH the Annual Prosperity Drive and your Capital Campaign donations at the same time. You will receive a pledge card for each of these campaigns.

- ◆ Annual Prosperity Drive donations are paid within one year as usual and the goal for the 2020-21 fiscal year is \$250,000, paid monthly, quarterly or annually.
- ◆ Capital Campaign donations can be paid monthly, quarterly or annually over a three year period. Remember, we unanimously voted to find River of Grass a permanent home. Our goal is \$750,000. We have promises of \$550,000 from members that were made during the Future Home Feasibility Study. Your generous gifts will ensure the goal is achieved!

We will have weekly updates on "The Wall" showing how we are doing and the number of pledges we have received. These tabulations will be very exciting to watch as the numbers rise to meet our dreams.

Let's all get on board and row River of Grass towards our Future Home!



By Pixie Wright

WHAT: River of Grass' Annual HIDDEN TREASURERS Yard Sale, April 4, 2020, 8:30am to 1:30pm that will raise over \$2000!

WHY: Fundraising, Recycling/Repurposing, Fellowship. By recycling what we no longer need, others benefit, the landfills are spared & River of Grass makes money. All are our values here at the River.

HOW CAN I HELP? **1. Identify & Drop Off Donations:** You have over a month to search your closets, studies, attics & garages for all those **hidden treasures** you've stashed away, outgrown or never use and are begging for a new home. We need your contributions of clothes, shoes, children & baby products, operational electronics (google & print that manual if you don't already have it), decorative items, yard items, art, kitchenware, athletic equipment, tools, suitcases/briefcases/purses & bags, furniture (must be in good condition), underused birthday/holiday gifts, lawn decorations or ...former auction items? (No books this year, sorry.) Plan to drop off items at River of Grass the week prior, Mar 30-Apr 3rd. **2. Volunteer** to help and make this the best, most enjoyable yard sale fundraiser ever! We need volunteers BEFORE to categorize, price and organize donations, DURING to help set up, organize and sell, and AFTER and take down. (**Donation Pickups for Breast Cancer** will haul away everything we don't sell.)

Direct questions and offers to volunteer to Ken Bresnahan, muarefl@gmail.com / 305-710-3868



RIVER OF GRASS BAND

MONTHLY MEMBER FEATURE

Gary Gonzalez

I began banging on the pots and pans when I was four years old. I knew three guitar chords when I was seven; the same three chords my father used to play and sing at large family gatherings where the whole family would sing along and harmonize. At nine years old I was elated to find a yellow plastic snare drum under the Christmas tree! I joined the percussion section of my Junior High band when I was 12, and bought my band teacher's jazz drum kit when I was 15. At that time, my brother-in-law Rick, who was the lead singer and drummer for a popular cover band in the 60's, began teaching me how to play classic rock drums. I continued to play guitar, teaching myself popular singer/songwriter hits and classic acoustic rock songs.

Song writing began in high school. Looking back, almost all of my original works were terrible.

At 19, I went away to college, sold my drum set, and brought my guitar with me. Before my first daughter was born, I studied classical guitar for a year. Her birth was the end of my lessons, but I continued to practice and study on my own.

Right around that time, I began collaborating with my sister-in-law, who wrote poetry. As I continued writing on my own and collaborating, my songs gradually improved, and I decided to record 3 of them to submit for a concert at Bayfront Park in Miami celebrating Earth Day 1990. To my surprise, they accepted, but I had a small problem. I recorded the songs with 3-part harmony, and I sang all the parts. So, I approached Rick to ask him if he would perform with me along with his daughter, my niece, Chris. He agreed, but just this one time. We decided on the band name, Relative Viewpoint. Seven years and three albums later, we were still going strong when Gayle suggested that I might like to meet a friend of hers who played guitar. That friend was Aaron Stang. We hit it off immediately and had a strong musical rapport, so I asked him to join Relative Viewpoint, and he agreed. Aaron performed with us for another 5 years, and he helped produce our first and only CD. Once Relative Viewpoint finished it's run, Aaron and I continued to play together and recorded a duet CD, an eclectic mix of instrumentals and vocal pieces, originals and covers.

Gayle, Allen and I have been performing together since before River of Grass became an official congregation, back when the congregation would meet in Weston Community Center. Rev. Amy and I met as musicians at her first SUUSI before ministry was even a remote consideration for her. One of my greatest joys is making music with my River of Grass musician family, which continues to expand with wonderful new talent. I plan to continue to play and sing until my fingers no longer work and my voice goes silent.



Getting to Know UU's

FAMOUS UNITARIAN

Kathy Jens-Rochow

MARGARET HIGGINS SANGER (SEPTEMBER 14, 1879 – SEPTEMBER 6, 1966)

BIRTH CONTROL ACTIVIST, SEX EDUCATOR, WRITER, NURSE

*“No woman can call herself free who does not own and control her body.
No woman can call herself free until she can choose consciously whether she will or will not be a mother.”*



In 1916, Sanger opened the first birth control clinic in the United States, which led to her arrest for distributing information on contraception. Her subsequent trial and appeal generated controversy as she felt that in order for women to have a more equal footing in society and to lead healthier lives, they needed to be able to determine when to bear children.

In 1921, Sanger founded the American Birth Control League, which later became the Planned Parenthood Federation of America. In New York City, she organized the first birth control clinic staffed by all-female doctors, as well as a clinic in Harlem, which also had an all African-American advisory council.

Sanger died in 1966, and is remains widely regarded as a founder of the modern birth control movement.

FOUNDATION UPDATE

Kip Barkley

We are applying for 501(c)(3) tax exemption status so that gifts coming in through the Foundation will be assured tax-deductible. What with the Standard Deduction being \$12,200 for single filers and \$24,400 for joint filers, this will be important to members making larger gifts for the new building. Gifts coming in through the congregation are already tax deductible. See www.nerdwallet.com/blog/taxes/standard-deduction/

Our current Board Leadership is:

- ◆ President & Director: Ed Lewis '21
- ◆ Vice President & Director: Kathy Jens-Rochow '20
- ◆ Secretary & Director: Melissa Buehler '20
- ◆ Treasurer & Director: Kip Barkley '20
- ◆ Director: Ahysa Boutron '21
- ◆ Director: Roy Schwartz '21

Kathy Jens-Rochow is retiring from our Board. Kip and Melissa want to continue. Jacquie Velazquez would like to join us.

Nominated for the three two-year terms open for election are: Jacquie Velazquez, Melissa Buehler, Kip Barkley.

See more about our Foundation online at riverofgrassuu.org/foundation.html

PROPOSED FINANCE POLICY

Brit Lundell, Treasurer

At the February 19th Board of Trustees meeting, the Finance Committee proposed a new Policy addressing the issuance and use of corporate credit/debit cards. In compliance with Policy 14, the proposed Policy is published below and will be approved or rejected at the next Board meeting. If you have any questions or feedback regarding the proposed policy, you are asked to direct your questions to Brit Lundell at treasurer@riverofgrassuu.org.

Issuance and Use of Corporate Credit/Debit Cards

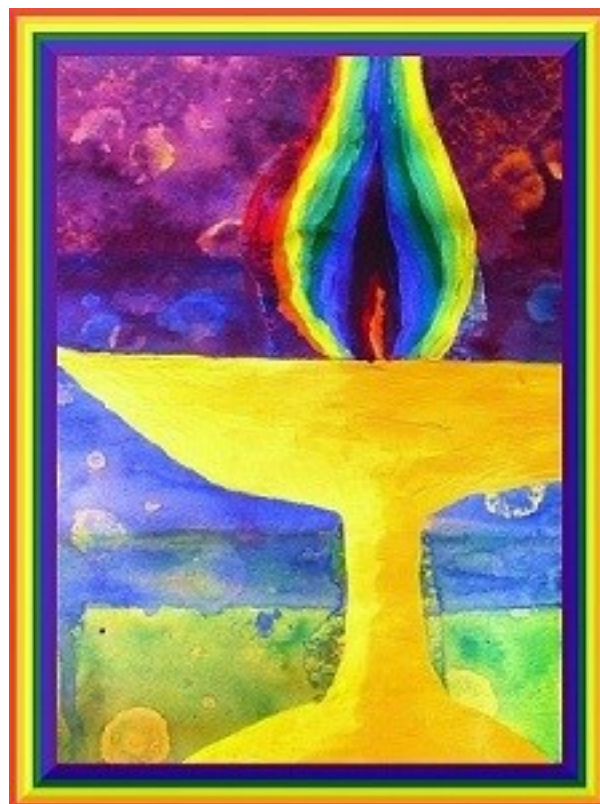
- ◆ **Issuance.** The Vice President or other Board designee is responsible for authorizing the issuance of a RoG corporate credit or debit card for an employee or congregant based on RoG's business needs. An employee or congregant may request consideration for a corporate credit or debit card by submitting a written request to the Vice President or other Board designee stating RoG's business need. If approved, the Vice President or other Board designee will coordinate with the Office Administrator to issue the corporate card. The authorized cardholder must accept in writing the requirements of the associated corporate card agreement prior to receiving the card.
- ◆ **Use.** The cardholder is responsible for adhering to the requirements of the corporate card agreement. Violation of the agreement is grounds for cancellation of the card and, depending on the particular action causing the violation, may be grounds for additional punitive action as elsewhere described in RoG Policies or Bylaws. The Vice President or other Board designee, in coordination with the Office Administrator and the Finance Committee, is responsible for updating the RoG corporate card agreement to reflect updated processes and needs, and for ensuring cardholders accept the updated agreement in writing.
- ◆ **Cancellation.** The Vice President or other Board designee will coordinate with the Office Administrator to cancel the card and will inform the cardholder when RoG's business needs no longer require the cardholder to use a corporate card. Upon notification, the cardholder is responsible for promptly returning the card.

You may notice that the Policy requires several instances of communications, acceptances, and approvals. The Finance Committee and our Office Administrator are working diligently to establish and document methods for this process, including any necessary forms and related instructions. If you have any questions regarding the status of this process, please contact our Office Administrator at office@riverofgrassuu.org.

POETRY SERVICE – MARCH 22



Members are invited to submit a poem for our annual poetry reading service. The theme is “Abundance”. Poems must be brief (no more than 4 minutes reading time) and in keeping with our UU principles. For questions or submissions see Zena Tucker or email membership@riverofgrassuu.org. All poems must be received by March 6.



FAITH DEVELOPMENT

WE ARE THE LOVE PEOPLE

Karen Gonzalez



*Love surrounds me, this I know.
For my spirit tells me so.
All of us to love belong.
It fills our hearts and makes us strong.
Yes, love surrounds me,
Yes, love surrounds me,
Yes, love surrounds me.
My spirit tells me so!*

We are the **LOVE** people, the people who *Side with Love*. How do we show our kids we love them? We furnish a nursery and hire a loving attendant to give them care. We volunteer to lead Faith Development classes where stories are shared, ideas are listened to and hearts make room. We share our worship space with all sizes and readily bend a little lower to give fist bumps and hugs. We celebrate their joys and empathize with their sorrows. We sing to them every Sunday! No wonder their spirits tell them that love surrounds them! Recently our Fireflies and Dragonflies made heart magnets and pins to share with all of you. Thank you for being the **LOVE** people. I think they love you back!

Family Fun Event for March – a Potluck Picnic in the Park after service on the 8th: The weather is beautiful, and our playground is not yet in existence, so let's gather at Robbins Park where there is plenty of space to run, jump and practice all kinds of shenanigans!

It's back! **The 2nd Annual Variety Show Extravaganza** will be on Saturday, April 4th. Dust off those ukuleles and juggling balls, freshen up those jokes, and be on the lookout for the perfect partner to complete your act. Sign up before someone signs you up!

CARING TEAM

Your Caring Team would like to welcome new members. If you would like to join please contact Deb Giblin Davis, Georgette Lewis or Kristine Barkley. If you know someone from our congregation in need let us know.

Many of our members at the River are on this team and we send out information about those who need some help and have given us permission to send the message out. Our members send cards, make phone calls and delivered meals to our members in their time of need. Some of us can offer rides and do some shopping. Some of us make visits to homes and hospitals.

We also support members through critical life times for friends and family and help coordinate memorial services and going away gatherings.

The Caring team and Rev. Amy provide a wonderful culture of caring at River of Grass, living out our Principles of embracing the inherent worth and dignity of all and treating each other with compassion and respect.

We cannot provide long term care but we each find joy in helping when we can. When you receive word of a person in need simply contact them and offer the things you can do.

Thank you

Deb Giblin Davis, Georgette Lewis and Kristine Barkley



TAX PLANNING FOR A LARGE GIFT

Kip Barkley, Treasurer, River of Grass UU Congregation Capital Foundation, Inc.

We are about to enter into our Capital Campaign to lead us into our new home. Here are some tax thoughts for those contemplating a larger gift. Be aware that dealing with taxes is like dealing with a hospital: both involve planning. It makes a really big difference whether you walk in through the Emergency Room or the front entrance. The cost savings can be thousands of dollars.

For those contemplating making a large gift, it might come out of either accumulated cash and securities, a Traditional IRA, or an Inherited IRA.

For a gift of stocks or mutual funds, give securities you have held for more than one year and give them directly. Do not sell them first and give the cash. Be aware that in any one year, your charitable deduction can only be a maximum of 50% of your Adjusted Gross Income on Line 8b of your 1040. That means if your Adjusted Gross Income in 2020 will be \$100,000, your maximum allowed charitable deduction will be \$50,000. Any more than that rolls forward as a deduction into 2021.

For 2020, the Standard Income Tax Deduction for Married Filing Jointly is \$24,800. You want to be giving more than your Standard Deduction in order to benefit from any decrease in taxes.

If you have a Traditional IRA, and meet age requirements, you may give your Required Minimum Distribution to our Capital Campaign and it will come out tax free. Any withdrawal going directly to you is taxable income. Beyond the required minimum, you may give up to \$100,000 total from your IRA in any one year to charity.

If you have an Inherited IRA, you do not get the tax benefit from a direct distribution. Any money you withdraw is taxable income. To achieve a tax benefit, you must give more than your Standard Deduction.

An alternative strategy is to consider a resource like the Charles Schwab Charitable Fund. See www.schwabcharitable.org. Here you donate a minimum of \$25,000 to the fund which you can then dole out to charities in the following years. This, plus your gift to the Capital Campaign, gets your total charitable giving far above the Standard Deduction. Then, for the next 10 years, you pay your church pledge out of this charitable fund.

Such strategies are not for everyone. It is for members able and looking to give generously and reap tax benefits. There are complicated rules involved. Talk to your tax professional and do not rely on me. I share what I have seen, but I have no credentials to offer such advice. But, yes, I do like giving.



THE EN-ROADS CLIMATE WORKSHOP

WHAT DOES IT TAKE TO SOLVE THE CLIMATE CRISIS?

WHAT CAN AN INDIVIDUAL DO TO HELP?

Broward Climate Alliance and Citizens Climate Lobby present a new, interactive climate workshop. The participants will work together to create major solution scenarios to limit global warming to 1.5°C. Solutions such as carbon pricing, renewables, reforestation and carbon dioxide removal are among 18 measures available to be tested and simulated for effects on global warming projections. The chosen solutions are demonstrated graphically using the recently released En-Roads climate simulator. These interactive graphs illustrate each solution's relative effects in lowering greenhouse gas emissions and global temperatures. En-Roads is a simulation model from MIT Sloan and others using the best available current science and systems technology.

www.climateinteractive.org/tools/en-roads/

Monday, March 2, 7:30 pm at the River

Elaine Franklin, Environmental Sustainability Coordinator,
City of Hollywood

Jeff Dorian, Broward Citizens Climate Lobby and

Steve Jens-Rochow, Broward Climate Alliance

SSJGT@riverofgrassuu.org

STRATEGIC ITEMS – SEEKING ENERGY

On May 5, 2018 members voted in a Strategic Plan, to help guide us through 2023. The plan contains over 50 items, spread across 3 key themes: Love, Learn, Lead.

Over the past 20 months, the majority of the items have been implemented! Thanks to dedicated and ambitious members, committees, teams, small groups, affinity groups, and covenant groups. And your board of trustees has helped to guide the process, and adjust as we learn and grow.

At this point in time, there are only 12 strategic items left to be implemented, as we are well ahead of the 5 year schedule.

The graphic shows how it all fits together - Members & Friends, Committees, Teams, Groups, Staff, and Board - as well as the remaining Strategic Items. Should you have interest and energy to grab hold of a Strategic Item, please reach out to the board! And let your talents help row this river together!

Here is the list of the Strategic Items ready for someone's energy:

Love:

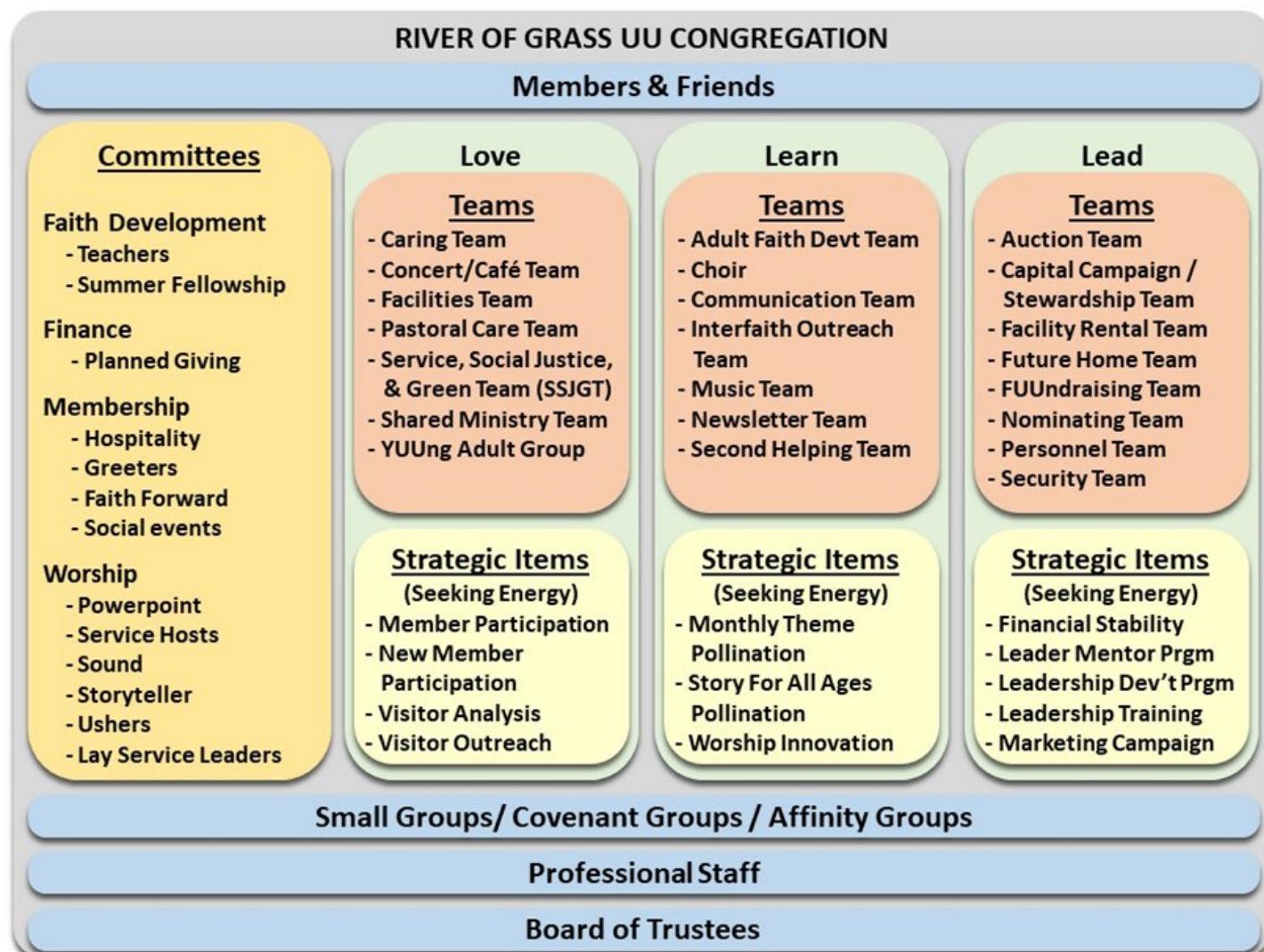
- Member Participation
- New Member Participation
- Visitor Analysis
- Visitor Outreach

Learn:

- Monthly Theme Pollination
- Story For All Ages Pollination
- Worship Innovation

Lead:

- Financial Stability
- Leader Mentor Program
- Leadership Development Program
- Leadership Training
- Marketing Campaign



WHAT'S THIS?

(STORIES OF HOW THINGS AT RIVER OF GRASS UU MADE THEIR WAY TO BE WITH US)

Maureen Lundell

Sitting there quietly on the shelves below the clock in the Hospitality Area is the newest thing our congregation has acquired. It reveals - every 9 seconds - who's who at River of Grass UU. Our unobtrusive digital photo frame; that helpful and hard-working device.

“Other churches have photos of their Boards and committee leaders on their walls, but we don't have space” observed Kathy Jens Rochow, Membership Co-Chairperson. And anyone who's enjoyed our worship services can understand that all the many, many baffles taking up so much wall space are all there to make this rented property have great sound. Cue digital technology...

As a newcomer to River of Grass UU, Barbara Ratchford noticed that we have a tendency – a confusing tendency – to use only first names as we refer to other River of Grass folk in announcements from the pulpit and at Hospitality Hour. Barbara felt that there should be “more ways in which we can know each other and start conversations and give people an entrée to one another.”

Zena Tucker, Membership Co-Chair, agreed with those sentiments and came across an Amazon Tech Deal for a sweet digital photo frame. Once a new member pointed it out, it seemed so obvious that if newcomers could see who's who among our congregational leaders, it would certainly make it easier to strike up a conversation during Hospitality Hour with or about that person along with that interest.

And as Barbara Ratchford said, “it seemed like there should be more visibility of important people who are doing big jobs at our congregation and should be thanked and applauded”. So, if you take a look at that digital photo frame, you'll see all those people, from our minister and staff to every volunteer member on the Board of Trustees and all those heading up a committee or group. It really is quite a lengthy presentation to be enjoyed over a cup of coffee or tea at Hospitality Hour. If you're interested in some aspect of all the many parts of River of Grass UU, find that person whose photo on the digital photo frame shows that they lead that committee or group; they will be happy that you did!

NB: Since it came up, and please forgive this heavy handed and extra suggestion...but why not have Amazon donate 0.5% of your purchases to our congregation by selecting River of Grass UU as your charity of choice via smile.amazon.com. Thank you!



amazonsmile
You shop. Amazon gives.



UPCOMING EVENTS

Sunday, Mar 1	12:00p	Being A UU Parent class	River of Grass
Sunday, Mar 1	12:00p	Faith Forward Inquirers Series #5	River of Grass
Monday, Mar 2	7:30p	SSJGT presents En-Roads Climate workshop	River of Grass
Tuesday, Mar 3	7:30-8:30p	Flowing River Sangha	River of Grass
Thursday, Mar 5	7:00-9:00p	Men's Group	River of Grass
Saturday, Mar 7	7:00-10:00a	Full Moon Daughters: Beautiful bird watching	Wakodahatchee Wetlands 13270 Jog Rd, Delray Beach
Saturday, Mar 7	9:00a-12:00p	Congregational work day	River of Grass
Saturday, Mar 7	11:30a-1:30p	SSJGT presents Climate Lobby	River of Grass
Saturday, Mar 7	1:30p-3:30p	SSJGT presents Broward Climate Alliance	River of Grass
Sunday, Mar 8	12:30-2:30p	Focus Initiative Feeding the Soul series	River of Grass
Sunday, Mar 8	12:30-2:00p	Faith Development family park picnic	Robbins park 4005 Hiatus Road, Davie
Monday, Mar 9	7:00-9:00p	Finance meeting	River of Grass
Monday, Mar 9	7:30p	SSJGT presents En-Roads Climate workshop	River of Grass
Tuesday, Mar 10	7:30-8:30p	Flowing River Sangha	River of Grass
Wednesday, Mar 11	3:30-4:30p	Mindful Meditation group	River of Grass
Wednesday, Mar 11	7:15-9:15p	bUUKies book group	River of Grass
Saturday, Mar 14	9:00-11:00a	Lifenet4Families volunteer day	1 NW 33 rd Terr, Ft Lauderdale
Sunday, Mar 15	12:00-1:30p	Faith Forward Inquirers series #6	River of Grass
Sunday, Mar 15	12:00p	SSJGT climate demonstration	River of Grass
Monday, Mar 16	6:15-8:15p	South Florida Mindful Coalition	River of Grass
Tuesday, Mar 17	7:30-8:30p	Flowing River Sangha	River of Grass
Wednesday, Mar 18	6:30-8:45p	River of Grass Board meeting	River of Grass
Thursday, Mar 19	7:00-9:00p	Men's Group	River of Grass
Saturday, Mar 21	9:00a-12:00p	SSJGT presents Broward League of Women Voters	River of Grass
Saturday, Mar 21	7:00p doors open 8:00p concert	River of Grass Café presents Kiya Heartwood	River of Grass
Sunday, Mar 22	12:00p	Being A UU Parent class	River of Grass
Sunday, Mar 22	2:00-5:00p	SSJGT presents Moms Demand Action meeting	River of Grass
Monday, Mar 23	6:00-9:00p	SSJGT JAM meeting	River of Grass
Tuesday, Mar 24	7:30-8:30p	Flowing River Sangha	River of Grass
Wednesday, Mar 25	3:30-4:30p	Mindful Meditation group	River of Grass
Wednesday, Mar 25	5:30-8:30p	SSJGT and Planned Parenthood	River of Grass
Thursday, Mar 26	7:00-7:45p	Welcome Table Communion Circle w/ Rev Amy	River of Grass
Friday, Mar 27	7:00-9:00p	Drum circle w/ Rev Amy	River of Grass
Sunday, Mar 29	10:30a	New Member Sunday	River of Grass
Sunday, Mar 29	ALL DAY	KUPCAKE KICKOFF ANNUAL PROSPERITY CAMPAIGN AND CAPITAL CAMPAIGN BEGINS	River of Grass
Tuesday, Mar 31	7:30-8:30p	Flowing River Sangha	River of Grass
Wednesday, Apr 1	4:00p	Membership committee meeting	River of Grass
Thursday, Apr 2	7:00-9:00p	Men's Group	River of Grass
Friday, Apr 3	9:00a-3:00p	Yard Sale setup	River of Grass
Saturday, Apr 4		Variety Show	River of Grass
Saturday, Apr 4	8:30a-1:30p	RIVER OF GRASS ANNUAL YARD SALE	River of Grass
Saturday, Apr 4	9:00a-12:00p	Congregational work day	River of Grass
Saturday, Apr 4	11:30a-1:30p	SSJGT presents Climate Lobby	River of Grass
Saturday, Apr 4	1:30p-3:30p	SSJGT presents Broward Climate Alliance	River of Grass



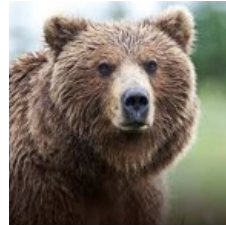
WhaleCoast Alaska 2020

Experience a unique, awe-inspiring Alaska tour!

- National Parks Tour - June 13-23, 2020 — \$3,346
- All-Alaska Tour - July 10-22, 2020 — \$4,034

Our 27th Year!

- Whales, bears, moose, caribou, eagles
- Native Alaskan culture
- Alaska's finest museums and attractions
- Spectacular travel on the Alaska Railroad
- Alaska UU homestays and dinner parties
- Hiking, canoeing, kayaking, rafting options



Website: WhaleCoastAK.org

Tour Director: Dave Frey, Fairbanks UU & Alaska travel enthusiast

Email: dfrey@whalecoastak.org

Hurry! Each tour sells out when 40 guests register

☐

*Reach out to Scott May
or Carolyn Sant Angelo,
as they joined this
journey a few years ago
and rave about it.*